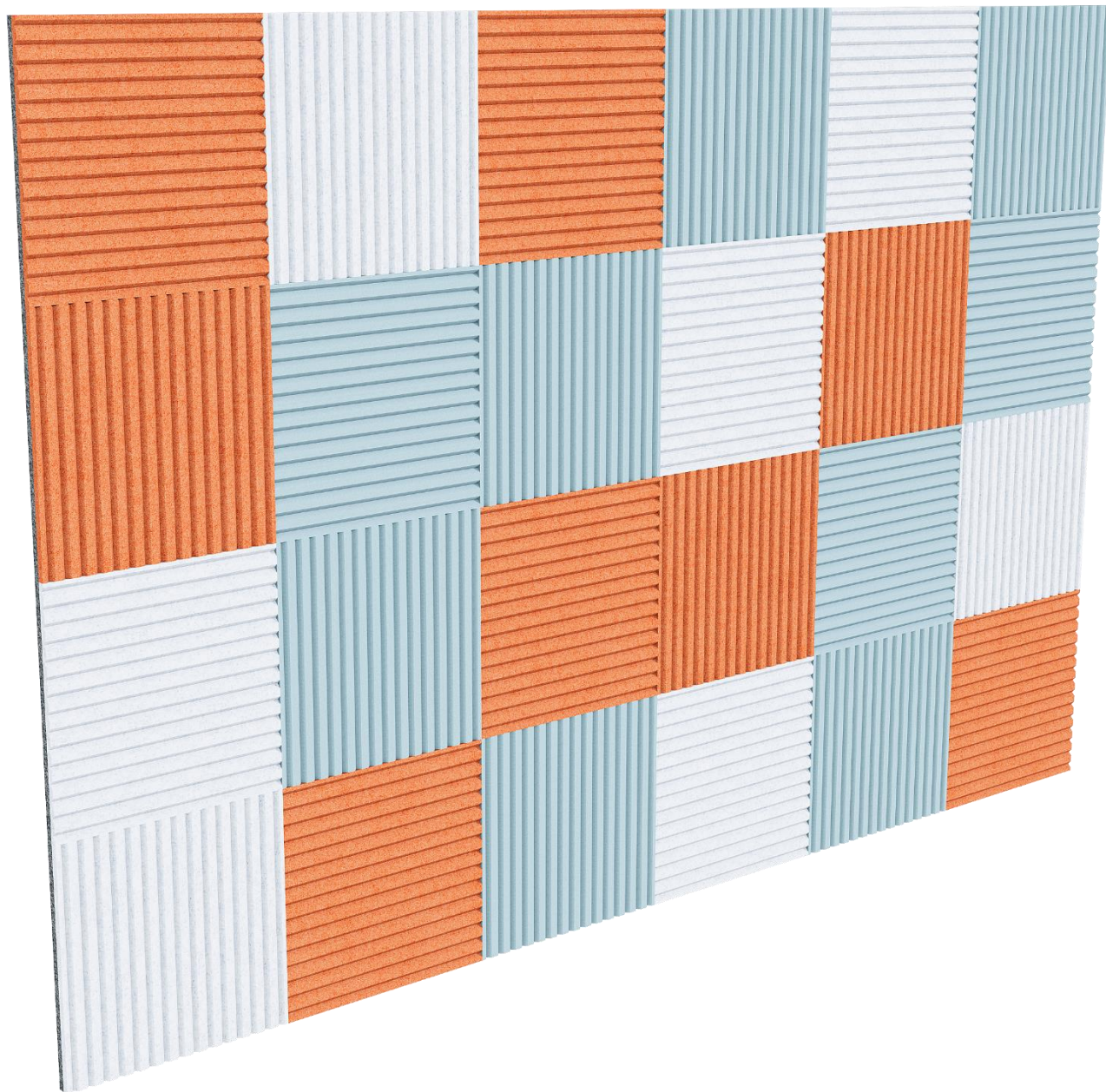


# ZONIO

## Wall Panels (2D)



---

ZONIO Wall Panels (2D)

Design: Kai Stania (AT)  
Manufacturer: RIM CZ a.s.

ZONIO Wall Panels (2D)

The Agilo & Zonio collection offers comprehensive solutions for modern offices. With a focus on modularity, acoustics and adaptability, it connects work and team tables with shelving systems and acoustic elements made of recyclable PET felt. Thanks to smart construction, the elements are easy to assemble. All parts of the Agilo & Zonio collections are interconnected, creating a user-friendly whole that is open to change and designed with attention to detail.

Description	The Zonio 2D wall-mounted panel improves acoustic comfort in the room while also serving as an attractive decorative element. By combining different shapes, colours and patterns of individual tiles, it is possible to create a unique wall covering that matches the interior style and personal preferences. The panel thus contributes not only to better acoustics, but also to a more pleasant atmosphere and an enhanced visual impression of the working environment.																	
PET panel	<p><b>Panel made of PET felt, thickness 9 mm, melange finish:</b></p> <p>The panel is made of environmentally friendly PET felt (100% polyester, 60% recycled) with a thickness of 9 mm and a weight of 1900 g/m² ± 7%. It offers acoustic properties, low weight, reduced flammability and thermal insulation.</p> <p><b>Colours:</b> anthracite, light grey, grey-blue, beige</p> <p><b>The wall panel consists of a base board and decorative tiles.</b></p> <p>The base board is mounted to the wall with screws. The tiles are fixed to the base board using double-sided adhesive tape.</p> <p><b>Dimensions and weight of base board:</b></p> <p><b>MT PW000</b> – 1200 x 1200 mm   2,7 kg</p> <p><b>MT PW001</b> – 1200 x 1800 mm   4,1 kg</p> <p><b>MT PW002</b> – 1200 x 2400 mm   5,5 kg</p> <p><b>Dimensions and weight of decorative tiles:</b></p> <p>1200 x 1200 mm; 2,7 kg   600 x 600 mm; 0,7 kg   300 x 300 mm; 0,2 kg</p>																	
Sound absorption	<p>Laboratory measured in a reverberation room according to <b>EN ISO 354</b>, with results classified according to <b>EN ISO 11654</b> (classes A–E). The result always relates to a specific configuration and installation:</p> <table><tr><th>Installation method</th><th>Weighted sound absorption coefficient</th><th>Absorption class</th></tr><tr><td>Without air gap (directly on substrate)</td><td>α<sub>w</sub> = 0.50</td><td>D</td></tr><tr><td>Air gap 50 mm</td><td>α<sub>w</sub> = 0.85</td><td>B</td></tr></table> <p>The resulting performance in the space depends on the specific installation. It is mainly influenced by the installation method (gap/offset) and the coverage area.</p>			Installation method	Weighted sound absorption coefficient	Absorption class	Without air gap (directly on substrate)	α <sub>w</sub> = 0.50	D	Air gap 50 mm	α <sub>w</sub> = 0.85	B						
Installation method	Weighted sound absorption coefficient	Absorption class																
Without air gap (directly on substrate)	α <sub>w</sub> = 0.50	D																
Air gap 50 mm	α <sub>w</sub> = 0.85	B																
Product variants	<table><tr><th>MT PW000</th></tr><tr><th>Dimensions: 1200 x 1200 mm</th></tr><tr><td>Decorative tiles: 1200 x 1200 mm 1 pc</td></tr><tr><td>Decorative tiles: 600 x 600 mm 4 pcs</td></tr><tr><td>Decorative tiles: 300 x 300 mm 16 pcs</td></tr></table>	MT PW000	Dimensions: 1200 x 1200 mm	Decorative tiles: 1200 x 1200 mm 1 pc	Decorative tiles: 600 x 600 mm 4 pcs	Decorative tiles: 300 x 300 mm 16 pcs	<table><tr><th>MT PW001</th></tr><tr><th>Dimensions: 1200 x 1800 mm</th></tr><tr><td>—</td></tr><tr><td>Decorative tiles: 600 x 600 mm 6 pcs</td></tr><tr><td>Decorative tiles: 300 x 300 mm 24 pcs</td></tr></table>	MT PW001	Dimensions: 1200 x 1800 mm	—	Decorative tiles: 600 x 600 mm 6 pcs	Decorative tiles: 300 x 300 mm 24 pcs	<table><tr><th>MT PW002</th></tr><tr><th>Dimensions: 1200 x 2400 mm</th></tr><tr><td>Decorative tiles: 1200 x 1200 mm 2 pcs</td></tr><tr><td>Decorative tiles: 600 x 600 mm 8 pcs</td></tr><tr><td>Decorative tiles: 300 x 300 mm 32 pcs</td></tr></table>	MT PW002	Dimensions: 1200 x 2400 mm	Decorative tiles: 1200 x 1200 mm 2 pcs	Decorative tiles: 600 x 600 mm 8 pcs	Decorative tiles: 300 x 300 mm 32 pcs
MT PW000																		
Dimensions: 1200 x 1200 mm																		
Decorative tiles: 1200 x 1200 mm 1 pc																		
Decorative tiles: 600 x 600 mm 4 pcs																		
Decorative tiles: 300 x 300 mm 16 pcs																		
MT PW001																		
Dimensions: 1200 x 1800 mm																		
—																		
Decorative tiles: 600 x 600 mm 6 pcs																		
Decorative tiles: 300 x 300 mm 24 pcs																		
MT PW002																		
Dimensions: 1200 x 2400 mm																		
Decorative tiles: 1200 x 1200 mm 2 pcs																		
Decorative tiles: 600 x 600 mm 8 pcs																		
Decorative tiles: 300 x 300 mm 32 pcs																		

Optional

- Base board and decorative tiles with rounded corners (R20)



- V-cut (pattern 1) for decorative tiles 1200 x 1200 mm
- V-cut (pattern 1) for decorative tiles 600 x 600 mm
- V-cut (pattern 1) for decorative tiles 300 x 300 mm

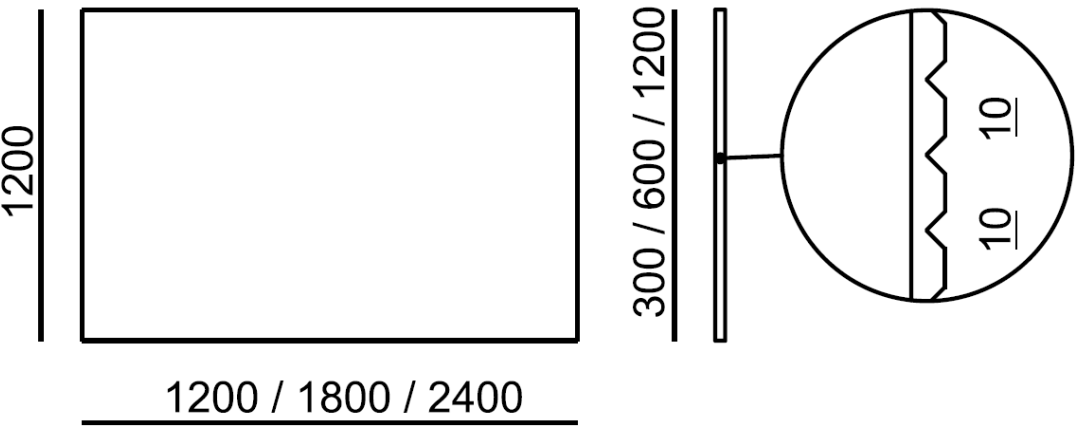
Certification

The PET material contains no volatile organic compounds (VOCs) or other harmful substances and complies with GREENGUARD, OEKO-TEX STANDARD 100, REACH and RoHS certifications. It is easy to clean and 100% recyclable.

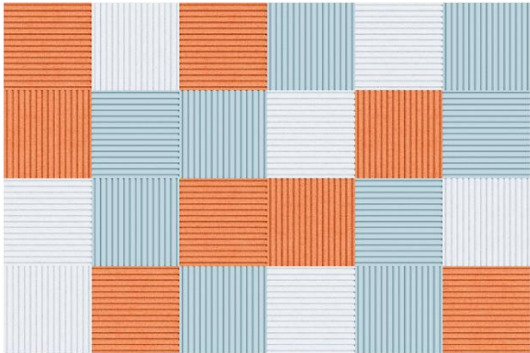
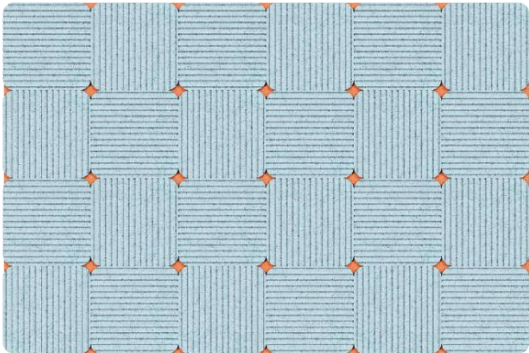
Warranty

3 years (see Terms & Conditions)

Dimensions (mm)



Gallery



Materials & Colours

PET Panels

Anthracite (PT-06), light grey (PT-04), grey-blue (PT-49), beige (PT-28)



PT-06



PT-04



PT-49



PT-28

